

May 2020



From the President



In a recent brainstorming session about trailblazing women in CRE in the 1990s, I realized how very few came to mind. This set me on a path of contemplating who equipped me to muscle through those early years when there were few successful females in my industry.

Honestly, I have to go back to my childhood and credit my grandmother for my spunk and determination. She was integral to my development, and I spent some years living with her early on. She provided for my needs and loved me desperately, but she was not a soft-landing place. She was the woman who put the rock in my hand when the neighbor girls were pelting me with rocks across their fence (neighborhood initiation)☺. Now just so you

Events

CREW and other local events



May 13, 2020 11:00 a.m. - 12:30 p.m.

[National Women in Real Estate](#)

[Register Now](#)

May 14, 2020 12:00 p.m. - 1:00 p.m.

[Charlotte - The U. S. Economy & Real Estate- Pandemics & Seismic with Stewart Title Chief Economist Ted Young](#)

[Register Now](#)

May 14, 2020 4:30 p.m. - 6:00 p.m.

[Thirsty Thursday Virtual After Hours](#)

[Register Now](#)

November 19, 2020

[CREW Charlotte's 30th Anniversary Gala and Impact Awards](#)

SAVE THE DATE

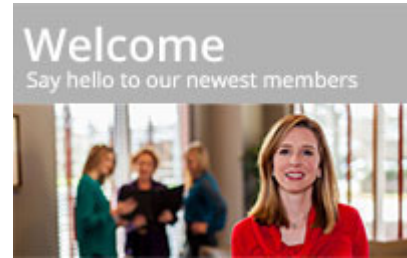
know, I never threw any rocks, but having that rock in my hand proved to be empowering.

I know this seems like a strange story when we are thinking about females who blaze the trail ahead of us, but that rock signified to me early on what it meant to be prepared. Within that small lesson was a larger tenet upon which I have built my career. Digging in, learning as much as I could about what I was working on, and banking up resources got me where I am, which is not such a bad place now looking in the rear-view mirror. For women it may be education, finding a mentor, making sure you have a sponsor within your organization who believes in you, using every opportunity to deepen your network and knowledge base. It may signify any number of other things to you personally. That commitment to plow on gets us to the next level.

Speaking of plowing on, the COVID-19 crisis has challenged us all to keep going, to dig deep into our networks for support. We are adjusting to new working conditions. We are homeschooling. Managing without daycare. Some of us just miss the camaraderie and appreciate a phone call of encouragement. Others are dealing with layoffs or furloughs in our companies, and whether it is us or others experiencing that devastating news, we are affected deeply. We are the employees. We are also the employers. We are all struggling.

Fortunately, as members of CREW Charlotte, we have one another. On any given day, I find myself the encourager at one point and the one needing encouragement at another. I gain strength from my family, my faith, and yes, from my CREW friends. I see you on Facebook, LinkedIn, Instagram, and I am inspired by what I see you engaging in. Supporting local charities, promoting local businesses, sharing sweet family photos of time spent with those you hold most dear. Raising funds to provide much needed masks to healthcare and other essential workers. Sewing them. When you struggle you are transparent and say so. When you experience something profound you share it. You are amazing!

We are currently unable to meet in person but we are there for one another. That is what makes CREW unique. Our resources and programs are still available and we are fervently planning for that day that we will be together again. Because we know that together we will



Janet Brooks
Clark Nexsen

Mary Clark
Claris Construction

Dee Deberry
EBI Consulting

Laura Green
Venture X

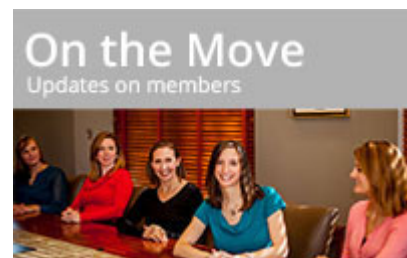
Hailey Innocent
Perkins Eastman

Hannah Jackson
Seyfarth Shaw LLP

Brooklyn Mitchell
Sands Investment Group

Paris Morgan
Lincoln Harris

Andi Patton
Childress Klein



Shelley Federal
Lat Purser & Associates

Please contact [Patty Drummond](#) with your career updates.

Member Spotlights

persevere.

Back to my story. The rock was not for throwing. It was a reminder to me that when under attack, I would need resources. So as I pressed that rock into the palm of my hand and contemplated what to do with it, I found the strength and courage to stand up for myself, do the hard work, and learn from the challenges of the journey.

Highlights

DID YOU KNOW?

CREW Network

Summit will be June

18 - 19 will be **virtual and FREE** for CREW members. This is an excellent opportunity to deepen your bench of global resources while learning from the movers and shakers in CRE. There is no reason not to [register!](#)



The deadline for our [Authentic Leadership Program](#) has been

extended to May 31. This program can serve as a gateway to next level trajectory in your career and CREW members get a discount! [Click here](#) to find out more.

GreerWalker Covid-

19 Resources. Are

you struggling to

prioritize your

business issues and opportunities? Do you need



Lindsay Rosti
J.E. Dunn Construction



Misty Shaffer
First American Title Insurance

[Click here to read the member spotlights.](#)

Members Making Deals

[Robin Haddock](#)

Carrie Sharp with Indoff recently helped me with furnishings and decor at two affordable housing developments for seniors. The properties both look beautiful and Carrie put so much thought and creativity into her work. It was wonderful working with her and seeing how much she cares about creating a nice home for the residents that will live in those communities. Thank you, Carrie!!!!

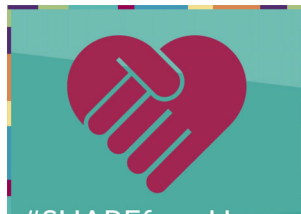
clarification on which strategies will accelerate the growth and profit of your business? Take five minutes to complete the 25-question GreerWalker Growth and Profit Diagnostic to identify from 10 key success factors:

- Your top three areas of high performance (what's working)
- Your top three areas for improvement (what's not working)
- An overall graph showing how you performed across the top 10 key success factors: marketing, sales, people, implementation, strategy, profit, leadership, innovation, technology, and systems.

Where will you focus your energy to succeed in the coming year? Visit <https://resources.greerwalker.com/> for this and other COVID-19 resources.

Do you have any **news** to share with us about you or your company? Have you won an **award**? Would you like us to **nominate** you for one? If so, please contact [Patty Drummond](#) with your information.

April Luncheon - Helping Area Non Profits from Home During the COVID-19 Crisis



Our April Virtual Luncheon featured SHARE Charlotte

[Click here for more deals.](#)

Job Opportunities

General Manager (Metropolitan) - Bayer Properties

[Click here for more job opportunities.](#)

Announcements

[FORTUNE has named Kimley-Horn to the top 100 Best Companies to Work For for the 13th time!](#)

[Click here for more announcements.](#)

Thank you to our sponsors

Diamond



Platinum

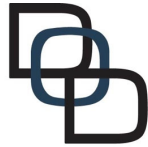


Marketing

Director, Melissa Hovey, teaching our members how to #ShareFromHome.

[Click here to read a summary of the luncheon.](#)

Thank You to Our April Luncheon Sponsors



DOD Office Interiors, Inc.
DODoffint.com

DOD Office Interiors

Interiors is on the cutting edge in providing custom workplace solutions to our client companies, servicing

all commercial businesses.

Founded in 2010, **Harker** emerged as a premier upfit



General Contractor in the Charlotte market. Their portfolio focuses on Class A office upfits including Corporate Headquarters for financial groups, institutional organizations and law firms.

Katten

Katten is an international law firm of more than 600 attorneys. The

Charlotte office is comprised of approximately 55 attorneys, and includes litigators, corporate

Gold



attorneys, trust and estates attorneys, structured finance attorneys and commercial real estate attorneys.

At [Tarkett](#) we help create great spaces. We are committed to delivering an easy customer experience by sharing our customers' needs, offering our expertise and being obsessed with execution.



[Click here for the complete sponsor spotlights.](#)

Silver



Connect With Us



This email was sent to ptrepp@carolina.rr.com
[why did I get this?](#) [unsubscribe from this list](#) [update subscription preferences](#)
CREW Charlotte · PO Box 36692 · Charlotte, NC 28236 · USA