

[View this email in your browser](#)

## From the President



### CREW Invests...

**In Education...** Hats off to our Special Events team and the entire membership, donors and sponsors who raised in excess of \$25,000 to contribute to the CREW Network Endowment, and local scholarships and endowments with UNC Charlotte and Queens University. Our contributions as a chapter and local organization continue to promote real estate career related fields to both graduate and undergraduate students at our local universities and across the country. While it was very unfortunate that our actual event was cancelled last month, it was amazing for our members and supporters to make the event a virtual success and continue to make a tremendous investment in young adults and future leaders in our industry.

**In The Community...** While the city was in civil unrest last month and our Casino Night function was cancelled, CREW members were able to contribute in a unique way to the less fortunate and those protecting our city in a difficult time. All the prepared food for the event was donated to Urban Ministries and the local respondent forces protecting the city. Our efforts, kindness and

## Events

CREW and other local events



October 21, 2016 8:00 a.m. - 10:00 a.m.  
[Future Charlotte Breakfast Forum](#)  
[Register Now](#)

October 26, 2016 5:30 p.m. - 8:30 p.m.  
[Heavy Hitters Commercial Real Estate Awards](#)  
[Register Now](#)

October 27, 2016 12:00 p.m. - 1:30 p.m.  
[Ballantyne Lunch Ladder \(Members Only\)](#)  
[Register Now](#)

October 27, 2016 12:00 p.m. - 1:30 p.m.  
[Midtown/SouthEnd Lunch Ladder](#)  
[Register Now](#)

November 8, 2016 11:15 a.m. - 1:00 p.m.  
[CREW Charlotte November 2016 Luncheon](#)  
[Register Now](#)

November 9, 2016 7:30 a.m. - 1:00 p.m.  
[Suicide Prevention Summit Presented by CFMA](#)  
[Register Now](#)

November 10, 2016 5:00 p.m. - 7:30 p.m.  
[2016 Charlotte ATHENA Leadership Awards](#)  
[Register Now](#)

Nov 17, 2016 5:00 p.m. - 7:00 p.m.  
[2020 Women on Boards](#)  
[Register Now](#)

member donations were recognized through media exposure and summarized as follows:

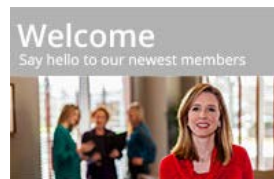
*"On behalf of the CMPD employees in the Non-Emergency Police Services Unit, thank you for delivering and sharing your clients' bounty with us" - P E Mangual, NEPS-CMPD.*

**In Health and Awareness...** As reported by the Charlotte Business Journal, CREW Charlotte is presently hosting its 9<sup>th</sup> Annual Queen City in Pink campaign where local businesses and landlords turn their buildings pink to raise support and promote awareness during Breast Cancer Awareness Month in October. CREW Member and Survivor, Laura Renegar says:

*"It seems as though we are all touched by breast cancer in some way and turning our Queen City pink is our way of saying "keep going" – "keep fighting" – "we are supporting you" – and "we understand." Whether we are saying it to the breast cancer fighters, the breast cancer survivors, the families, the caregivers, or the people that have lost someone to this disease, we are saying it in pink. "*

**In Advancement of Women and their Careers...** It has been a busy month promoting career opportunities in our local universities through UCREW, doing deals together as highlighted in our Member Making Deals section, promoting members through recent award announcements and preparing for leadership, education and training for the upcoming convention with CREW Network in NYC next week. But one of the highlights for me this week was to see the cycle come full circle. At our lunch meeting Tuesday, I was able to reflect on a UCREW event where we hosted students from UNC Charlotte to attend a lunch meeting and Kristy Venning with Beacon Partners was assigned to me to introduce around our organization that day. To see her tell her story as a panelist at one of our events is a demonstration of how this cycle of investing in education can become an advancement of women in their careers in real estate.

**In Ourselves** ...with our sponsorship drive in full



Due to the 14 month membership rate we will not welcome new members until November.



Please contact [Patty Drummond](#) with your career updates.

**Lisa Driftmyer**  
Bergmann Associates

**Rebecca Herron**  
MPV Properties

**Angela Ownbey**  
Radco Roofing

**Emily Padilla**  
Aston Properties

## Member Spotlights



**Michael Buzek**  
CoSaint Insurance



**Irene Suchoza**  
Carolinas HealthCare System

[To read the member spotlights, please click here.](#)

swing, take the opportunity to reinvest in CREW for 2017 as we further the opportunities, education, leadership and advancement of our CREW members in commercial real estate. **KEEP Investing CREW Charlotte!**

---

## Highlights

Join now and take advantage of our membership special! If you join CREW now you will receive a **14-month membership for the price of 12!** The membership special rate is \$350 plus a \$35 application fee. Affiliate Membership will be \$450 plus a \$35 application fee. Your CREW membership will be valid from November 1, 2016 through December 31, 2017. Any questions? Please do not hesitate to contact the Membership Committee. [Click here](#) to apply today!



The Corporate Culture Awards program honors

companies that foster a creative, collaborative workplace culture to enhance performance and sustain a competitive advantage. Smart leaders understand that culture is a company's greatest asset, driving performance and growth. What's more, a successful culture is actively and intentionally cultivated and developed.

Corporate Culture Awards winners will have championed for a positive, productive culture in their organization, and will have worked with employees to develop successful cultural practices. The final roster of winners will be chosen by an independent committee of local business leaders, profiled in *SmartCEOMagazine*, and celebrated at a high-energy awards event. For more information or to submit a nomination, please [click here](#).

---

## October Luncheon - Recent

## Members Making Deals

[Dawn Royle](#)

Thank you to Cheryl Steele and Horack Talley for the recent opportunity to provide title insurance on a Mecklenburg County property. We appreciate the opportunity to work with you and your team!

[Click here for more deals.](#)

## Job Opportunities

**Airport Property & Leasing Specialist**

[Click here for more jobs.](#)

## Announcements

[MPV WELCOMES REBECCA HERRON TO OFFICE & INDUSTRIAL LEASING TEAM](#)

[Click here for more announcements.](#)

## Developments in Charlotte

Submitted by Kathleen Chambers

### Who you Missed:

Chris Daly, Childress Klein  
Kristy Venning, Beacon Partners  
Brendan Pierce, Keith Corp  
Moderator: Allen Clark, Charlotte Business Journal

### What You Missed:

The program focused on recent significant commercial real estate developments in Charlotte.

To read the full recap, please [click here](#).

---

## Thank You to Our October Luncheon Sponsors!



### Ballantyne

Corporate Park, a 535-acre, master-planned business community in Charlotte, North Carolina, includes more than four million square feet

of Class A office space and nearly 600 hotel rooms as well as restaurants, medical and retail amenities.



Terracon is a 100 percent employee-owned consulting engineering firm

providing quality services to clients. Since 1965, Terracon has evolved into a successful multi-discipline firm specializing in:

- Environmental
- Facilities
- Geotechnical
- Materials

Xzact is a Premier



Total Technology Service Provider specializing in design/build services, and

Mission Critical/Data Center Design. XZact Technologies, headquartered in Charlotte, North Carolina covering the Southeast footprint.

To read their complete sponsor spotlights, please [click here](#).

### Board of Directors

**President**

Marie McLucas  
Primax Properties  
[mmclucas@primaxproperties.com](mailto:mmclucas@primaxproperties.com)  
704.954.7218

**Immediate Past President**

Jennifer Yoxheimer  
J.D. Goodrum  
[jennifer@jdgoodrum.com](mailto:jennifer@jdgoodrum.com)  
704.895.8842

**Director/Delegate/President Elect**

Jessica Rossi  
Kimley-Horn  
[jessicarossi@kimley-horn.com](mailto:jessicarossi@kimley-horn.com)  
704.954.7484

**Director/Delegate/Treasurer**

Adrienne Bain  
Citizens Bank  
[adrienne@bsquaredgroup.com](mailto:adrienne@bsquaredgroup.com)  
704.885.4251

**Director at Large**

Kathleen Chambers  
S&ME, Inc  
[kchambers@smeinc.com](mailto:kchambers@smeinc.com)  
704.604.6468

**Director at Large**

Jana Dolder  
Colliers  
[jana.dolder@colliers.com](mailto:jana.dolder@colliers.com)  
704.978.9030

**Director At Large**

Becky Lindahl  
Katten Muchin Rosenman  
[rebecca.lindahl@kattenlaw.com](mailto:rebecca.lindahl@kattenlaw.com)  
704.344.3141

**Director/Secretary**

Kim Marks  
ai Design Group  
[kmarks@aidginc.com](mailto:kmarks@aidginc.com)  
704.731.8057

**Director At Large**

Scarlet Powell  
XZact Technologies  
[scarlet.powell@xtcorp.com](mailto:scarlet.powell@xtcorp.com)  
704.252.2064

**Director At Large**

Robin Turner  
O'Leary Group Waste Systems  
[turner@olearywaste.com](mailto:turner@olearywaste.com)  
704.338.6898

**Director At Large**

Christie Zawtock  
Hart & Hickman  
[czawtock@harthickman.com](mailto:czawtock@harthickman.com)  
704.586.0007

**Executive Administrator**

Patty Drummond  
CREW Charlotte  
[executive@crewcharlotte.org](mailto:executive@crewcharlotte.org)  
704.968.0609

### Thank you to our sponsors

We could not be more honored and grateful of our sponsors. Their support of CREW Charlotte helps position our members to be the region's top real estate professionals through CREW Charlotte's commitment to professional and personal development. We sincerely thank our sponsors for their support!

### Diamond



Platinum



Gold



Silver





This email was sent to [executive@crewcharlotte.org](mailto:executive@crewcharlotte.org)  
[why did I get this?](#) [unsubscribe from this list](#) [update subscription preferences](#)  
CREW Charlotte · PO Box 36692 · Charlotte, NC 28236 · USA