

Trouble viewing this email? [Click here for a web version.](#)

5960 Fairview Road, Suite 400, Charlotte, NC 28210

[Home](#) | [Contact](#) | 704-496-2604



[DIRECTORY](#)

[CREW NETWORK](#)

[GET INVOLVED](#)

[JOIN CREW CLT](#)

[ABOUT US](#) | [EVENTS](#) | [MEMBERSHIP](#) | [SPONSORSHIP](#) | [NEWS & MEDIA](#) | [MEMBER RESOURCES](#)

Crew Connect

May 2012

CREW EVENTS

May After Hours-
Whiskey Warehouse
5/23/2012 5:30 PM

[Click here for Directions](#)
[Click here to Register](#)

SouthPark Lunch
Ladder

5/24/2012 11:45 AM

[Click here for Directions](#)
[Click here to Register](#)

Lake Norman Lunch
Ladder

5/24/2012 11:45 AM

[Click here for Directions](#)
[Click here to Register](#)

CREW Charlotte June
Luncheon

6/12/2012 11:30 AM

[Click here to Register](#)

OTHER EVENTS

2012 Global Charlotte
Event
5/16/2012 7:30 AM

Elliott Davis Webinar:
Cost Segregation
Studies: Benefits for
Business Owners and

FROM THE PRESIDENT

Well, for those of you who attended our luncheon at The Ritz last week...thank you for your patience during the evacuation excitement! I can say that in all of my years in the workforce, I have never had anything like that happen. The real bummer was that our expert panel was just starting to get going! On a positive note, we are not going to leave you hanging. We will have a continuation of this debate-style panel at our August 14th luncheon. Make sure you mark you calendars now so you don't miss out!



On another very positive note, I would like to share our exciting Casino Night results with everyone. CREW Charlotte raised an incredible \$9,000 at this year's event! As I mentioned last month, the proceeds from Casino Night will benefit The UNCC Belk College of Business and the CREW Foundation Scholarship Endowment Fund. The CREW Board voted to give (2) \$1,000 scholarships to UNCC. One of those scholarships will go to an undergraduate student pursuing a degree in a commercial real estate related major. The other will go to a graduate student in UNC-Charlotte's new MS in Real Estate program. The remaining \$7,000 will be our first installment towards our \$20,000 commitment to the CREW Foundation Scholarship Endowment Fund.

Thank you all for all that you've done to make these scholarships and endowments possible. Because of your efforts and generosity, we are able to help the best and brightest secure their dreams of pursuing careers in the commercial real estate industry.

HIGHLIGHTS

A surprise ending to the May lunch! The May lunch was interrupted by a fire alarm just as the panel of developers, lenders and attorneys had started their discussion ("Make Loans Not War!"). The scoop is that lots of CREW Connections were made on the street. The panel will be rescheduled for another date. **Let us know your CREW Connection street story!**

The Ritz Carlton Deal for CREW Charlotte Members The Ritz Carlton will be adding new manicure and pedicure services to their already fabulous spa menu June 1st. CREW Charlotte members will be given a 20% discount just for

Investors
5/30/2012 11:00 AM

2012 Women In
Business Awards
6/21/2012 11:00 AM

CREW BIZ

Let it work for you! Be sure to update your information so our local 200 and national 8,000 members know who you are. Plus, the member directory is a great tool to do business locally and nationally!

YOUR CREW PREFERENCES

On the CREW Charlotte website, set up your preferences so you can receive instant notifications of new members making deals, announcements, new business opportunities, new job opportunities, etc. Go under member resources and click on "preferences" to set up.

[See All Events](#)

MEMBER SPOTLIGHT



JESSICA ROSSI

Kimley-Horn and Associates, Inc.

[Click here to read full profile](#)

mentioning CREW. Just another advantage of your CREW Charlotte membership!

Mecklenburg Times Top 50 Influential Women Awards CREW Charlotte was overwhelmingly represented at the May 4th "Mecklenburg Times 50 Most Influential Women Awards". We had three CREW Charlotte members that were award winners...Holly Alexander, Kim Marks and Wanda Townsend! In addition, Janeen Miller-Hogue was an award presenter and Cindy Wolfe and Dawn Royle served as judges. Congratulations to our very influential winners!!!

Charlotte Business Journal's 2012 Women In Business Award Winners CREW Charlotte's Leadership Development Committee is proud to announce that four of CREW Charlotte's members are among the prestigious 26 winners of the Charlotte Business Journal's Women in Business Awards this year. The winners are Kati Hynes, Charlotte Chamber of Commerce; Lisa Huls-Fry, Cassidy Turley; Cristy Nine, Cushman & Wakefield/Thalhimer; and Liz Etheredge, Mecklenburg Paint.

These very deserving women will be honored during an awards celebration on Thursday, June 21st. In addition the winners will be profiled in a special section of the Charlotte Business Journal in the June 22nd edition.

UPCOMING CREW NETWORK EVENTS

Bridging the C Suite Gap: Online applications are now being accepted for the 2012-2013 CREW Network Executive Mentoring Program at www.crewnetwork.org. The nine-month program provides access to executive-level management and other resources to support leadership development and career advancement. Applications are due by May 18, 2012.

2012 Spring Leadership Summit: This event is held during the spring, fall and winter each year. The Leadership summit offers chapter and leadership development. The next event will be held June 14-15 in Montreal, Quebec. Deadline for application is May 21, 2012.

2012 CREW Convention & Marketplace: This is the premier, annual networking event for CREW Network that emphasizes business development, top speakers, educational opportunities and leadership training. This three day event takes place October 24-27 at Hilton Chicago in Chicago, IL.

MAY LUNCHEON SPONSOR: GREER & WALKER

Company name and location:

Greer & Walker
227 W Trade St # 1100
Charlotte, NC

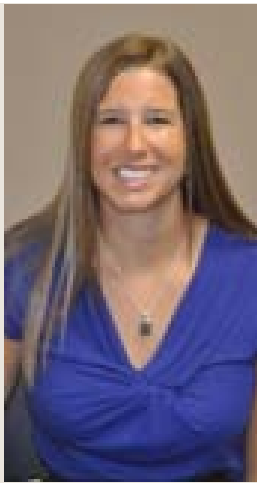


Brief history and employee information:

Founded in 1984, Greer & Walker is currently the eighth largest accounting firm in the Charlotte area and was recently acclaimed as one of the nation's "Top Five within the Best of the Best" accounting firms.

What they do:

Greer & Walker is a full service Charlotte-based CPA firm specializing in innovative



WHITNEY WHITE
A&K Painting

[Click here to read full profile](#)

WELCOME
NEW MEMBERS

Tiffany Huff
Salus Healthcare Advisors

[Click here to access full contact information](#)

MEMBERS ON THE MOVE

Please email Patty at executive@crewcharlotte.org with any changes in your contact information.

[Click here to access full contact information](#)

and responsive assurance, accounting, tax, and consulting strategies with a strong practice focus in the construction industry.

Ties to CREW:
Amanda Murphy
Tax Manager
amurphy@gwllp.com
704-377-0239

Kristin Washam
Audit Manager
kwasham@gwllp.com
704-377-0239

MAY LUNCHEON SPONSOR: INTERFACE FLOR

Company name and location:
InterfaceFLOR



Brief history and employee information:
Interface, Inc. is the worldwide leader in design, production and sales of modular carpet and a leading manufacturer and marketer of broadloom carpet. Headquartered in Atlanta, Interface has manufacturing locations on four continents and offices in more than 100 countries.

InterfaceFLOR revolutionized the commercial floorcovering industry by producing America's first free-lay carpet tiles in 1973 and is now the world's leading manufacturer of modular, soft-surfaced floorcovering for a wide range of commercial environments. InterfaceFLOR consistently leads the industry through innovation and environmental sustainability and is setting the pace for development of modular carpet using materials and processes that take less from the environment. InterfaceFLOR is headquartered in LaGrange, GA with positions throughout the U.S. <http://www.interfaceglobal.com/careers/>

What they do:
They are the world's largest manufacturer and marketer of designer modular floor coverings.

Interface believes in "Doing well by doing good", it's not just their business model, it's their ethos.

As one of the world leaders in sustainability, they have promised their customers that by the year 2020 they will eliminate any negative impact their company may have on the environment, they call it Mission Zero, they feel so strongly about it they have printed it on the back of every brochure.

At Interface they make beautiful, durable, smart floor covering while making the world a better place to live.

Ties to CREW:
Jean Russell

Account Executive
jean.russell@interfaceflor.com
 646-942-0473

ANNOUNCEMENTS

Janet Caponi of LS3P discusses the Chiquita relocation to Charlotte

CREW Charlotte Featured in NC Department of Commerce Newsletter!

Congratulations to Elizabeth Ross!

Cristy Nine and Anne Vulcano land Chiquita for the NASCAR ...

Anne Vulcano quoted in the Charlotte Observer!

CREW Charlotte fulfills \$25,000 pledge one year ahead of schedule!

[<<More](#)

MEMBERS MAKING DEALS

Nancy Olah

5/8/12

I want to extend my sincere thanks to Mary Wilken, ...

Carrie Sharp

5/4/12

It is not everyday that a fabric rep can give ...

Carrie Sharp

5/4/12

Thank you to Lisa Gallimore of Investors Title Insurance Company ...

[<<More](#)

CAREER CORNER

CLIENT COORDINATOR

MANAGER OF PROPERTY REPORTING AND ANALYSIS

MARKETING ADMINISTRATIVE ASSISTANT

MARKETING MANAGER

[<<More](#)

MESSAGE BOARD

Mary Lindsay Evans

We have a client buying property in town and wants ...

Barry Rigby

Looking for tenants at Langtree...

Exit 31, Mooresville, NC We currently ...

[<<More](#)

Board of Directors

2012 PRESIDENT

Dawn Royle
 Master Title Agency
Dawn.Royle@AllenTate.com
 704.348.2866

IMMEDIATE PAST PRESIDENT

Holly Alexander
 Concorde Construction Co.
Holly.Alexander@ConcordeConst.com
 704.975.8540

DIRECTOR / DELEGATE / PRESIDENT ELECT

Barbara Briccotto, IIDA, LEED AP
 Bonitz Modular Interiors
barbarabriccotto@bonitz.com
 704.560.8798

DIRECTOR/DELEGATE

Kim Marks
 ai Design Group, Inc.

DIRECTOR/TREASURER

Bobbi Jo Lazarus
 Elliott Davis

DIRECTOR/SECRETARY

Carrie Sharp
 Director/Secretary

KMarks@aiDGInc.com
704.731.8057

blazarus@elliottdavis.com
704.808.5245

carrie@jmainteriors.com
704.372.5260

DIRECTOR AT LARGE
Heidi Holquist
Reznick Group
Heidi.Holquist@reznickgroup.com
704.295.9398

DIRECTOR AT LARGE
Janeen Miller-Hogue
The Miller-Hogue Law Firm
jmhogue@m-hlaw.com
704.307.4344

DIRECTOR AT LARGE
Julie Seidenstein
Parker, Poe, Adams & Bernstein
julieseidenstein@parkerpoe.com
704.335.9530

DIRECTOR AT LARGE
Wanda Townsend
Johnston, Allison & Hord, PA
WTownsend@JAHLaw.com
704.998.2215

THANK YOU TO OUR SPONSORS

We could not be more honored and grateful of our sponsors. Their support of CREW Charlotte helps position our members to be the region's top real estate professionals through CREW Charlotte's commitment to professional and personal development. We sincerely thank our sponsors for their support!

THANK YOU TO OUR PLATINUM SPONSORS



THANK YOU TO OUR GOLD PARTNERS



Katten Muchin Rosenman LLP



ACCOUNTING • TAX • BUSINESS ADVISORY



THANK YOU TO OUR SILVER PARTNERS



Morehead Title Company



This email was sent to [email address suppressed]. If you are no longer interested you can unsubscribe instantly.