

Subscribe

Share ▼

Past Issues

Translate ▼

RSS

[View this email in your browser](#)

February 2016

## From the President



**Have you ever read our mission statement?** Our core purpose is to influence the success of the commercial real estate industry by

advancing the achievements of women. We strive to provide additional opportunities and advancement for our members through education, **networking**, recognition and leadership. CREW Charlotte is the best Real Estate networking organization in town because our members prioritize doing business with each other, both locally and across the nation. Our membership represents nearly every discipline in commercial real estate including law, brokerage, leasing, property management, finance, title/escrow, corporate real estate, development, asset management, engineering, construction and more. Our metrics are impressive. Over **72%** of members nationally have referred business to another member in the last 12 months. At least **54%** of members acknowledge receiving a referral from another member in the last 12

## Events

CREW and other local events



February 19, 2016 8:00 a.m. - 10:00 a.m.

**[CREW Charlotte Committee Fair \(MEMBERS ONLY\)](#)**

[Register Now](#)

February 25, 2016 12:00 p.m. - 1:30 p.m.

**[CREW Lunch Ladder - Ballantyne \(MEMBERS ONLY\)](#)**

[Register Now](#)

February 25, 2016 11:30 a.m. - 1:00 p.m.

**[CREW Lunch Ladder - Midtown/South End \(MEMBERS ONLY\)](#)**

[Register Now](#)

March 8, 2016 11:15 a.m. - 1:00 p.m.

**[CREW Charlotte March Luncheon - District 6: sub "URBAN" The Evolution of a Dynamic MarketPlace with Councilman Kenny Smith](#)**

[Register Now](#)

March 8, 2016 5:30 PM to 7:30 PM

**[Building Futures: A Symposium on Affordable Housing](#)**

[Register Now](#)

March 15, 2016 9:30 a.m. - 5:00 p.m.

**[CREW Charlotte's Inaugural Members](#)**

months. More than **70%** of our Network membership consists of senior leaders, owners and decision makers. Almost **79%** of our local membership indicates networking is a primary benefit of membership.

CREW has over 9000 members across the nation, with over 200 in Charlotte so the opportunity to build relationships that lead to member-to-member business is there for you. I would encourage you to maximize the member benefit of networking and look for opportunities to exchange business information. Follow up with the contacts you make at luncheon events. Find a lunch ladder in your area and enjoy the intimacy of the smaller luncheon setting to build relationships. Join a committee. The opportunities are many. Make it easy for others in the network can find you by completing your [CREWbiz](#) profile.

If you make a connection and do business with other members, we want to hear about it! The **Members Making Deals** section of our website is solely dedicated to sharing our success stories! There is nothing like the power of a network.

Don't miss upcoming opportunities to network with other members. We have the Committee Fair, Golf Clinic, ABC Event, monthly Lunch Ladders and committee meetings all in the next 30 days. Find your place to find business!! Happy Networking!

---

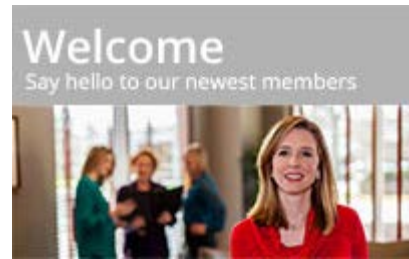
## Highlights

Have you seen the **CREW Charlotte website** recently? It has been updated to include CREW Charlotte members in the photographs. Check it out! A big thank you

[Only Golf Event](#)  
[Register Now](#)

---

March 17, 2016 8:00 a.m. - 9:0 a.m.  
[CREW Before Hours](#)  
[Register Now](#)



**Kristy Bogert**  
American Asset Corporation

**Cat Francis**  
Charlotte Business Journal

**Teresa Hocutt**  
Whiteside Industrial Properties

**Kelly McLaren**  
Finley Group

**Stephanie Nesbit**  
JLL

**Emily Padilla**  
GreerWalker



Please contact [Patty Drummond](#) with your career updates.

**Brian Koontz**  
Parker Poe

**Wanda Townsend**  
Parker Poe

Member Spotlights

to **Asterisk Creative** and the members of the CREW Charlotte leadership team who could participate in the photo shoot.

**CREW Charlotte Donates to Queens University of Charlotte -**

From the proceeds of our 2015 Casino Night, we gave a **\$5,000 scholarship to Queens University** at the February luncheon. **Danielle Konopelski** received the scholarship. Danielle is currently a sophomore at Queens and is completing a bachelor's degree in Finance. Thank you to everyone who has participated in this effort for all your hard work.



**At the March luncheon,** CREW Charlotte is partnering with **Dress for Success!** Every woman who comes to Dress for Success is treated with dignity and respect and can walk through the doors feeling confident and welcome. They focus on helping women prepare for the journey ahead of her. Their concern is where she is going, not where she has been. We ask members to bring suits and other professional apparel that you are ready to pass along – you can get a jump start on your spring cleaning. Please bring clean, professional clothing-suites/dresses, skirts, blouses/sweaters, purses, shoes, jewelry and accessories. A representative from Dress for Success will be in attendance to collect the clothing at check in. Donation receipts will be available upon request.

Keep an eye on on social media and



**Jenn Stuart**  
Holder Construction Company



**Mary Wilken**  
Insite Properties

[To read the member spotlights, please click here.](#)

## Members Making Deals

[Nancy Olah](#)

Thank you to Shane Nault, Building EnergetiCx, PLLC, for helping me to quickly find an engineer to provide advice to one of my clients.

[Click here for more deals.](#)

## Job Opportunities

**Architect - Campbell Design**

[Click here for more jobs.](#)

## Announcements

[GENSLER'S BARRINGER CONSTRUCTION HEADQUARTERS WINS AIA AWARD](#)

[Click here for more announcements.](#)

the website for information in the following months regarding our involvement in **Habitat for Humanity's Women Build** as we are excited to continue our relationship with Habitat for Humanity in 2016! We look forward to your participation! Please contact [Jennifer Bickett](#) or [Nancy Everhart](#) with any questions.

**CREW Members Winning Awards** Congratulations to the Charlotte Business Journal's 40 Under 40 Award Winners: **Amy Davis** of BRG, **Nichole Kelley** of Wells Fargo Bank, and **Bobbi Jo Lazarus** of Elliott Davis Decosimo. If you or another CREW member you know would be a good candidate for an award, please contact [Sallie Jarosz](#) or [Cristy Nine](#) and CREW can make that nomination for you.

**Laugh for the Cure** After an unprecedented cancellation of the Race for the Cure in October due to unsafe weather conditions, Susan G. Komen Charlotte is excited to give supporters a unique and clever opportunity to "laugh it off!" and support the cause. Comic great, Bobby Collins will be the headlining comedian at the **2016 Laugh for the Cure** event on Thursday, March 10, 2016 at the McGlohon Theater in Uptown Charlotte. For more information, please [click here](#)



**CREW**



**NETWORK®**

**Educate fellow members and friends about CREW Network Foundation**

Most members have heard that the CREW Network Foundation is the charitable arm of CREW Network, but many do not know how the Foundation supports women in the CRE industry. Please feel free to utilize this

PowerPoint presentation and video to help spread awareness about CREW Network Foundation and its programs.

- [Download the PowerPoint presentation »](#)
  - [Download the scholar video \(29 MB\) »](#)
  - [Watch the scholar video \(YouTube\) »](#)
- 

## CREW February Luncheon - Eye on the Economy: An Economic Update with Spencer Levy of CBRE

Submitted by Mary Wilken



Come on down ..... Spencer Levy discussed the global economy and its impact on commercial real estate in the United States with a focus on the “Unusual Suspects,” those factors that move beyond the standard analysis that can help you and your clients better understand (and be successful) in today’s volatile markets, including China’s impact on the world economy.

To read the full luncheon summary, please [click here](#).

---

## Thank You to Our February Luncheon Sponsor



**Wells Fargo** has built the most comprehensive commercial real estate banking, capital markets, and advisory platform in the industry. Their transactions include all sizes, property types, and locations throughout the U.S. and select markets abroad.

To read their complete sponsor spotlight, please [click here](#).

---

## Board of Directors

### President

Marie McLucas  
Primax Properties  
[mmclucas@primaxproperties.com](mailto:mmclucas@primaxproperties.com)  
704.954.7218

### Immediate Past President

Jennifer Yoxtheimer  
J.D. Goodrum  
[jennifer@jdgoodrum.com](mailto:jennifer@jdgoodrum.com)  
704.895.8842

### Director/Delegate/President Elect

Jessica Rossi  
Kimley-Horn  
[jessicarossi@kimley-horn.com](mailto:jessicarossi@kimley-horn.com)  
704.954.7484

### Director/Delegate/Treasurer

Adrienne Bain  
Citizens Bank  
[adrienne@bsquaredgroup.com](mailto:adrienne@bsquaredgroup.com)  
704.885.4251

### Director at Large

Kathleen Chambers  
S&ME, Inc  
[kchambers@smeinc.com](mailto:kchambers@smeinc.com)  
704.604.6468

### Director at Large

Jana Dolder  
Colliers  
[jana.dolder@colliers.com](mailto:jana.dolder@colliers.com)  
704.978.9030

### Director At Large

Becky Lindahl  
Katten Muchin Rosenman  
[rebecca.lindahl@kattenlaw.com](mailto:rebecca.lindahl@kattenlaw.com)  
704.344.3141

### Director/Secretary

Kim Marks  
ai Design Group  
[kmarks@aidginc.com](mailto:kmarks@aidginc.com)  
704.731.8057

### Director At Large

Scarlet Powell  
XZact Technologies  
[scarlet.powell@xtcorp.com](mailto:scarlet.powell@xtcorp.com)  
704.252.2064

### Director At Large

Robin Turner  
O'Leary Group Waste Systems  
[rturner@olearywaste.com](mailto:rturner@olearywaste.com)  
704.338.6898

### Director At Large

Christie Zawtocky  
Hart & Hickman  
[czawtocky@harthickman.com](mailto:czawtocky@harthickman.com)  
704.586.0007

### Executive Administrator

Patty Drummond  
CREW Charlotte  
[executive@crewcharlotte.org](mailto:executive@crewcharlotte.org)  
704.968.0609

## Thank you to our sponsors

We could not be more honored and grateful of our sponsors. Their support of CREW Charlotte helps position our members to be the region's top real estate professionals through CREW Charlotte's commitment to professional and personal development. We sincerely thank our sponsors for their support!

## Diamond



Platinum



Gold



Silver

